

## SAFETY INFORMATION

**Please read these instructions carefully and store in a safe place for future reference.**

- This appliance is to be kept out of the reach of children.
- This appliance can be used by children aged from 8 years and above and persons with reduced physical, sensory or mental capabilities or lack of experience and knowledge if they have been given supervision or instruction concerning use of the appliance in a safe way and understand the hazards involved.
- Cleaning and user maintenance shall not be made by children without supervision.
- Children should be supervised to ensure they do not play with the appliance.
- **Warning:** If the supply cord is damaged, it must be replaced with a special cord or assembly available from the manufacturer or its service agent.

## GUARANTEE

Halo 2x30 has a three year guarantee and if maintained as recommended in these instructions should continue to work for many years. Use of non-approved consumables may invalidate the guarantee (excludes consumables - Tubes and glueboards). The guarantee does not cover breakdown due to misuse, incorrect operation or use in an incorrect application.

## CONTENTS OF PACKAGE

- 1 x Halo flykiller
- 2 x Glupac® glueboard
- 1 x Mains cable
- 2 x Removable aluminium debris tray
- 4 x High powered UV tubes (Fitted)
- 2 x Suspension fixing keyrings
- 2 x Mains cable retaining pins
- 1 x Servicing key fob

**WARNING - THIS APPLIANCE MUST BE EARTHED (CLASS 1)**

## POSITIONING AND GUIDANCE FOR USING HALO

Not suitable for applications where potentially explosive environments may exist.

Halo should ideally be installed at or lower than 2 meters to the ground, preferably in the darkest place within the area to be protected. **ENSURE THERE IS A MINIMUM OF 550mm BETWEEN ONE SIDE OF HALO AND THE ADJACENT SURFACE, TO PROVIDE ENOUGH SPACE TO INSERT THE GLUEBOARD.** Do not position the unit close to windows, skylights or other sources of light, or where it may be obscured by furniture, doors or other obstacles. Ideally, Halo should be visible from every part of the area to be protected.

Halo should ideally be in operation for 24 hours a day, ensuring your premises are kept free of flying insects. Insects are most attracted to Halo at night when there is no competition from daylight or other light sources.

## INSTALLATION

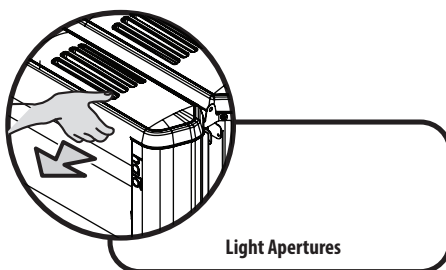
To ensure Halo reaches you in perfect condition, a protective film covers the aluminium door. Remove this film before use.

Fix the suspension keyrings (supplied in the fixing kit) onto the suspension

hooks on Halo. Then attach two lengths of appropriate strength chain to the suspension reyrings, ensuring that they have been cut to the appropriate length so that Halo will hang at or lower than 2 meters to the ground. Use appropriate fixing method to attach Halo and the suspension chains to the suspending surface.

Once Halo is installed in position, fit the Glupac® glueboard in place as described in the glueboard replacement section of this document. Insert the mains cable into Halo, and run the length of the cable up one side of the product, fixing in position with the two mains cable retaining pins. Finally, connect the plug into an appropriate power supply.

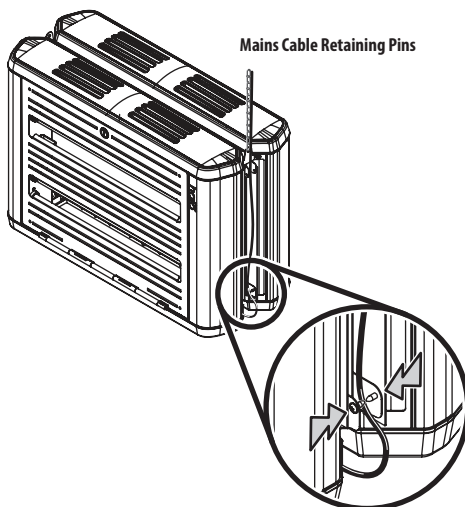
To maximise the effectiveness of Halo in catching flying insects, the top of the product has light apertures to increase the UV irradiance emitted from the product. However, these apertures can be covered to protect the glueboard from debris and prolong its life, by simply sliding the reflective aluminium cover forward.



## CLEANING

CLEANING SHOULD BE CARRIED OUT AFTER ENSURING THAT THE UNIT IS DISCONNECTED FROM THE MAINS SUPPLY.

It is recommended that cleaning is carried out regularly when the glueboard is replaced. Once the glueboard is removed, the unit should be thoroughly wiped down with a damp cloth, removing any build up of dirt. Ensure the unit is completely dry before reconnecting it to the power supply.



## GLUEBOARD REPLACEMENT

The glueboard should be replaced every month with a genuine Glupac® glueboard. Use of non-approved glueboards may invalidate your guarantee. Halo comes supplied with discreet black glueboards with printed grids for simple insect evaluation and monitoring. High efficacy replacement yellow glueboards are available.

To replace the glueboard...

1. Remove the used Glupac® glueboard by simply pulling it clear from either the left or right of the unit.
2. Remove the protective release paper from the new Glupac® glueboard.
3. Slowly slide the new Glupac® glueboard into position, until the glueboard 'drops' into the locator, indicating it is in the centre of the unit.

Always ensure the selected genuine Glupac® glueboards are compatible with your unit, available from your pest control operator or Pelsis Ltd.

## TUBE REPLACEMENT

TUBE REPLACEMENT SHOULD BE CARRIED OUT AFTER ENSURING THAT THE UNIT IS DISCONNECTED FROM THE MAINS SUPPLY.

To ensure the efficiency of Halo in catching flying insects, the UV tubes should be replaced annually. After twelve months the phosphor coating that emits the correct wavelength of UV light has burnt away and the UV output is diminished substantially.

To replace the UV tubes...

1. Open the swing down front guard, by using the supplied servicing key fob.
2. Rotate the tube through 90°, freeing it from the tube holders.
3. Pull the tube away from the chassis.
4. Dispose of the used UV tube in conjunction with local WEEE regulations.

## STARTER REPLACEMENT

STARTER REPLACEMENT SHOULD BE CARRIED OUT AFTER ENSURING THAT THE UNIT IS DISCONNECTED FROM THE MAINS SUPPLY.

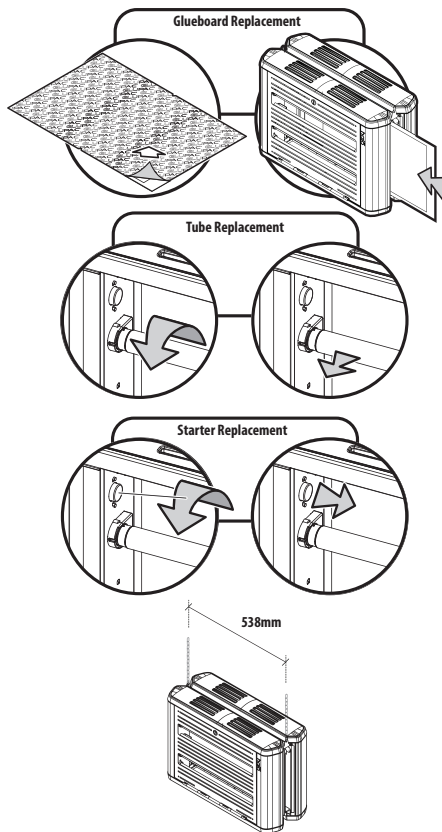
The starters provide an extra spark to initially light the UV tubes. Starters wear out and should be replaced at the same intervals as the UV tubes.

To replace the starters...

1. Rotate the starter anti-clockwise.
2. Pull the starter free from the unit.

## SPECIFICATION / REPLACEMENT PARTS

<b>Model</b>	Halo 2x30
<b>Voltage</b>	230V ~ 50Hz
<b>Dimensions (mm)</b>	588 x 404 x 236
<b>Weight (kg)</b>	11.5
<b>Light Output</b>	60W
<b>Tubes</b>	4 x TPX15-18
<b>Starter</b>	4 x I154
<b>Glueboard</b>	6 x GB012 (Black), GB011 (Yellow)



### For private households: Information on Disposal for Users of WEEE

This symbol on the product(s) and / or accompanying documents means that used electrical and electronic equipment (WEEE) should not be mixed with general household waste. For proper treatment, recovery and recycling, please take this product(s) to designated collection points where it will be accepted free of charge. Alternatively, in some countries, you may be able to return your products to your local retailer upon purchase of an equivalent new product. Disposing of this product correctly will help save valuable resources and prevent any potential negative effects on human health and the environment, which could otherwise arise from inappropriate waste handling. Please contact your local authority for further details of your nearest designated collection point. Penalties may be applicable for incorrect disposal of this waste, in accordance with your national legislation.

### For professional users in the European Union

If you wish to discard electrical and electronic equipment (EEE), please contact your dealer or supplier for further information.

### For disposal in countries outside of the European Union

This symbol is only valid in the European Union (EU). If you wish to discard of this product, please contact your local authorities or dealer and ask for the correct method of disposal.

We are constantly developing our products to meet the evolving standards of our customers and as such, information in our instruction manuals may change. Please visit [www.insect-o-cutor.co.uk](http://www.insect-o-cutor.co.uk) for the latest version of this manual. It is not intended that this manual forms part of any contract with Pelsis Ltd.

©2023 Pelsis