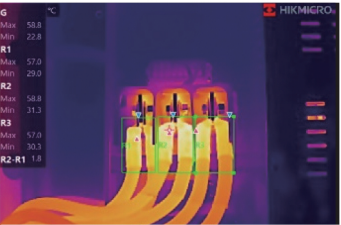


M SERIES

Advanced thermal imaging camera with full function analysis



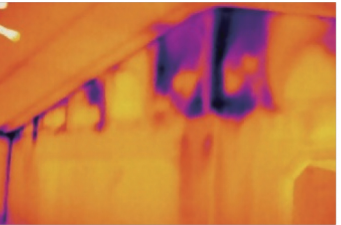
APPLICATIONS



Check Electrical



Check Underfloor Heating



Check Building Insulation



Check Mechanical Status

WHAT'S IN THE BOX

- Thermal Imager with Wrist Strap
- Interchangeable and Rechargeable Li-ion Batteries (x2)
- Power Supply for Battery Charger
- Two-bay Battery Charger
- International Use Plugs (US/EU/UK/AU) for Power Supply (x4)
- USB 2.0 A to USB Type-C Cable
- Hard Carrying Case
- Calibration Certificate / Quick Start Guide
- 16GB Micro SD card(M10/M20/M20W) / 64GB Micro SD card(M30)

SPECIFICATION

Infrared Image	IR Resolution	192 × 144 (27,648 pixels)
	SuperIR	384 × 288 (110,592 pixels)
	NETD	< 40 mK (@ 25 °C, F#=1.0)
	Image Frequency	25 Hz
	Field of View (FOV)	18.8° × 14.1°
	Focus Mode	Manual Focus
Image Display	Display	640 × 480 Resolution, 3.5" LCD Touch Screen
	Color Palettes	White Hot, Black Hot, Rainbow, Ironbow, Red Hot, Fusion, Rain, Blue Red
	Image Modes Thermal	Thermal/Visual/Fusion/PIP/Blending
Measurement & Analysis	Object Temperature Range	-20 °C to 550 °C (-4 °F to 1022 °F)
	Accuracy	Max (±2°C/3.6°F, ±2%), for the ambient temp. 15°C to 35°C (59°F to 95°F) and object temp. above 0°C (32°F)
	Measurement Tools	Center Spot, Hot Spot, Cold Spot User-definable: 10 spots, 1 line, 5 rectangles, and 5 circles
General	Storage Media	Removable 32 GB Micro SD Card
	Image Storage Capacity	Approx. 60,000 Images
	Annotations	Voice note: max. 60 seconds; Text note: max. 200 characters
	Video Storage Capacity	Approx. 15 hours
	Wi-Fi	802.11 b/g/n (2.4 GHz and 5 GHz)
	Bluetooth	Bluetooth 4.2
	Battery Type	Interchangeable and rechargeable Li-ion battery
	Battery Charging Time	Approx. 4 hours fully charged(Adapter Output: 5 V 2 A)
	Battery Operating Time	Approx. 6 hours
	Protection Level	IP54
	Working Temperature Range	-10°C to 50°C (14°F to 122°F )
	Weight	Approx. 660g (1.46 lb)
	Dimension	244 × 100 × 104 mm (9.6 × 3.9 × 4.1 in)

**Multiple Product Options**

M series products provide wide-angle and manual focus options. The manual focus with a larger focal length option (without "W") is ideal for electrical, HVAC, and mechanical inspection where focusing on specific components is critical. The "W" series features a fixed focus wide FOV making them ideal for scanning walls, floors, and large-scale items.

Without "W"

With "W"

**1-Tap Level & Span**

Quickly highlights the area of the image you are interested in by narrowing the span with one tap on the **3.5" LCD touchscreen**, instantly improving image contrast and highlighting potential problems.

Auto Level & Span

Manual / 1-Tap Level & Span

**Interchangeable Battery System**

Includes **2 interchangeable Li-ion batteries** and a dual bay charger to provide you with **up to 12 hours** of operation. You can stay powered up for even the longest inspections.

2 interchangeable Li-ion batteries

**On-camera Analysis**

Offers 17 measurement rules, 7 color alarm palettes and 4 image modes for powerful on-camera analysis.

**Camera Interface**

Intuitive 3.5" LCD Touch Screen or interactive buttons to easily navigate to any function. Use either or both!

**Multiple Image Annotations**

Support voice, text, and QR Code Scan annotations, helping to improve inspection efficiency and productivity.