

# SORKIL® BLOCK

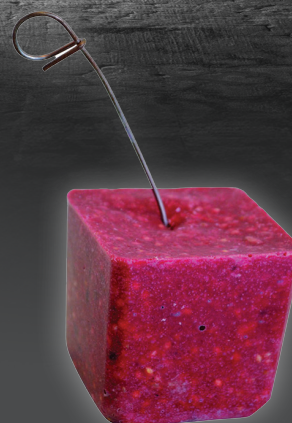


**Active:** Difenacoum 50ppm

**Colour:** Red

**Size:** 10kg - 20g Blocks

**SKU:** 1101003889



Sorkil® Block with integrated hook is specially designed for secure placement in sewers and tamper-resistant bait stations. The hook fitting ensures the bait can be fixed firmly in place, preventing loss or wash-away while maintaining high palatability.

*For trained professional use only in compliance with the UK rodenticide stewardship regime.*

## Benefits and features:

- Suitable for rats (*Rattus norvegicus* & *Rattus rattus*) and mice (*Mus musculus*)
- Approved for use in and around buildings and in sewers
- Integrated hook system for safe, secure placement in sewers
- High stability in damp and humid conditions
- Extruded 20g block with multi-edged design to exploit natural gnawing behaviour

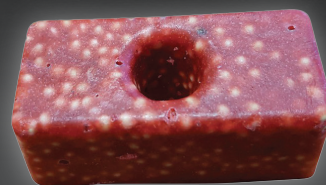




# SORKIL® BLOCK



**Active:** Difenacoum 50ppm  
**Colour:** Red  
**Size:** 10kg - 20g Blocks  
**SKU:** 1101003890



Sorkil® Block with central hole is designed for flexible use in bait stations and sewers. The holed design allows blocks to be easily threaded onto rods or wires for secure anchoring, ensuring safety, compliance and effective rodent control in demanding environments.

*For trained professional use only in compliance with the UK rodenticide stewardship regime.*

## Benefits and features:

- Suitable for rats (*Rattus norvegicus* & *Rattus rattus*) and mice (*Mus musculus*)
- Approved for use in and around buildings and in sewers
- Holed block design for secure fixing with rods or wires
- Reliable stability in damp and humid environments
- Ready-to-use 20g blocks encourage natural gnawing behaviour for rapid uptake





# SORKIL® G WHOLE WHEAT GRAIN



**Active:** Difenacoum 50ppm  
**Format:** Loose grain bait  
**Size:** 10kg  
**SKU:** 1101003891



Sorkil® G Whole Wheat grain is a ready-to-use difenacoum grain bait, formulated to deliver fast and effective control of rats and mice. The high-quality food-grade wheat ensures excellent palatability, even where alternative food sources are available. Suitable for use indoors and around buildings, Sorkil® Whole Wheat offers trusted performance in challenging environments.

*For trained professional use only in compliance with the UK rodenticide stewardship regime.*

## Benefits and features:

- Proven control of rats (*Rattus norvegicus* & *Rattus rattus*) and mice (*Mus musculus*)
- Whole wheat formulation – highly attractive to rodents, ensuring reliable uptake
- Effective in both indoor and outdoor around building applications
- Ready-to-use loose grain bait for tamper-resistant bait stations
- 24-month shelf life with added bittering agent and dye for safety compliance

