

1. PRODUCT NAME

Trappit Wasp Bag

2. PRODUCT CODE

16989

3. PRODUCT DESCRIPTION

This disposable “Bag” trap is designed for the trapping of *Vespula* spp. (such as *Vespula germanica* and *Vespula vulgaris*) and several other social wasp species. The insects are lured into the trap through several vented channels within the lid that allowing access to the liquid food-based attractant within the trap (sold separately). Once in the trap, the insects cannot locate the way out and drown in the attractant.

The trap consists of a hanging top entry bag.

TRAP

Dimensions:	(Approx.) 280mm x 200mm x 90mm
Material:	Plastic
Colour:	Printed bag with yellow top
Approximate Weight:	(per Trap empty) 50g
Kit Contents:	25 Traps
Packaging:	Carton

4. RECOMMENDATIONS FOR USE

Species Name

Vespula spp. (Common Wasp)

Pest Status

A summer-time nuisance and hygiene pest due to scavenging of foodstuffs being a nuisance where foods are prepared and served.

Generations

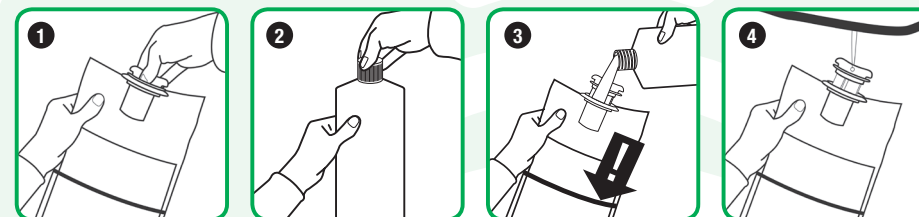
Multiple generations but tend to only be a problem in the hottest and driest months.

Trapping Season

The disposable wasp trap is most effective against wasps in the later part of the summer when the wasps begin to become a nuisance. Earlier use of the bait will not result in large numbers of wasps being caught since at this time they will be searching for alternative food sources (in the UK, these traps will be effective from June to September).

Preparation of Trap / Trap Placement

- 1 Take the wasp bag and unscrew the lid so the bag hangs from it.
- 2 Open the 1L or 5L Agrisense Liquid wasp bait attractant mixture (sold separately).
- 3 Holding the lid of the wasp bag, fill the bag through one of the entry vents under the lid, to the level marked.
- 4 Hang the trap vertically by the twist tie attached to the lid in a suitable outdoor position. Avoid hanging the bag in direct sunlight. Ensure that the trap is held securely in place by the twist wrap and onto the item that the trap is hung from. Where large numbers of traps are being used, place the traps about 10m apart. This distance should be reduced in areas of particularly high insect activity. It is recommended that these traps draw wasps away from surrounding areas where the wasps are a nuisance. Ideally they should be placed in more secluded areas of the property.



Change Of Trap

The trap should be inspected regularly and replaced when the liquid is saturated with dead wasps. The trap can be topped up with water to the line if needed. To dispose of the trap, screw the lid closed, remove from its hanging position and throw away via standard waste disposal means. Do not take the trap indoors due to the potential risk of the bag breaking open.

FOR SAFETY, ENVIRONMENTAL AND DISPOSAL DETAILS SEE THE CORRESPONDING SAFETY DATA SHEET